

Lafayette Metered Water Consumption

Month	2012	2013	2014	2015	2016	2017	2018	2019	2020	2021
	CF Billed	CF Billed	CF Billed	CF Billed	CF Billed	CF Billed	CF Billed	CF Billed	CF Billed	CF Billed
JANUARY	811,300 6,068,945	764,800 5,721,107	846,800 6,334,504	893,100 6,680,852	777,500 5,816,104	939,400 7,027,200	919,200 6,876,094	800,600 5,988,904	926,400 6,929,953	807,500 6,040,519
FEBRUARY	884,100 6,613,527	840,400 6,286,629	802,700 6,004,613	806,800 6,035,283	736,000 5,505,662	963,100 7,204,488	766,600 5,734,566	899,500 6,728,727	765,000 5,722,597	824,800 6,169,932
MARCH	687,047 5,139,468	723,200 5,409,912	729,200 5,454,795	786,400 5,882,681	840,100 6,284,384	844,800 6,319,543	828,500 6,197,610	998,422 7,468,715	765,219 5,724,236	772,500 5,778,701
APRIL	792,018 5,924,706	740,900 5,542,317	814,200 6,090,639	905,300 6,772,114	829,500 6,205,091	873,700 6,535,730	763,700 5,712,873	809,900 6,058,473	943,233 7,055,873	978,400 7,318,940
MAY	917,913 6,866,466	1,315,900 9,843,616	778,300 5,822,088	900,300 6,734,712	951,300 7,116,218	925,000 6,919,481	1,092,600 8,173,216	1,094,500 8,187,429	868,609 6,497,647	1,196,100 8,947,449
JUNE	908,500 6,796,052	1,057,100 7,907,657	1,176,400 8,800,083	1,296,800 9,700,738	1,382,700 10,343,314	1,313,500 9,825,662	1,244,700 9,311,003	1,316,900 9,851,096	1,055,500 7,895,688	
JULY	1,176,200 8,798,587	1,367,100 10,226,618	1,565,100 11,707,761	1,848,900 13,830,732	1,544,400 11,552,914	1,801,100 13,473,164	1,501,200 11,229,756	1,404,800 10,508,634	1,505,300 11,260,426	
AUGUST	1,703,472 12,742,855	1,630,800 12,199,231	1,494,400 11,178,888	1,582,900 11,840,914	1,694,600 12,676,488	1,634,800 12,229,153	1,682,200 12,583,730	1,623,200 12,142,379	1,678,100 12,553,060	
SEPTEMBER	1,263,336 9,450,410	1,176,000 8,797,091	1,339,100 10,017,164	1,240,000 9,275,844	1,584,200 11,850,639	1,105,100 8,266,722	1,244,200 9,307,262	1,220,600 9,130,722	1,565,700 11,712,249	
OCTOBER	1,095,700 8,196,405	876,600 6,557,423	1,020,700 7,635,366	895,400 6,698,057	953,400 7,131,927	942,200 7,048,145	920,200 6,883,574	981,400 7,341,382	884,900 6,619,512	
NOVEMBER	757,900 5,669,486	752,300 5,627,595	817,600 6,116,073	759,500 5,681,455	958,900 7,173,070	918,200 6,868,613	952,700 7,126,691	801,100 5,992,644	838,300 6,270,919	
DECEMBER	784,200 5,866,223	796,100 5,955,242	730,300 5,463,023	779,600 5,831,813	846,800 6,334,504	819,900 6,133,278	827,700 6,191,626	790,600 5,914,099	865,700 6,475,886	
YEARLY AVG	981,807	1,003,433	1,009,567	1,057,917	1,091,617	1,090,067	1,061,958	1,061,794	1,055,163	915,860

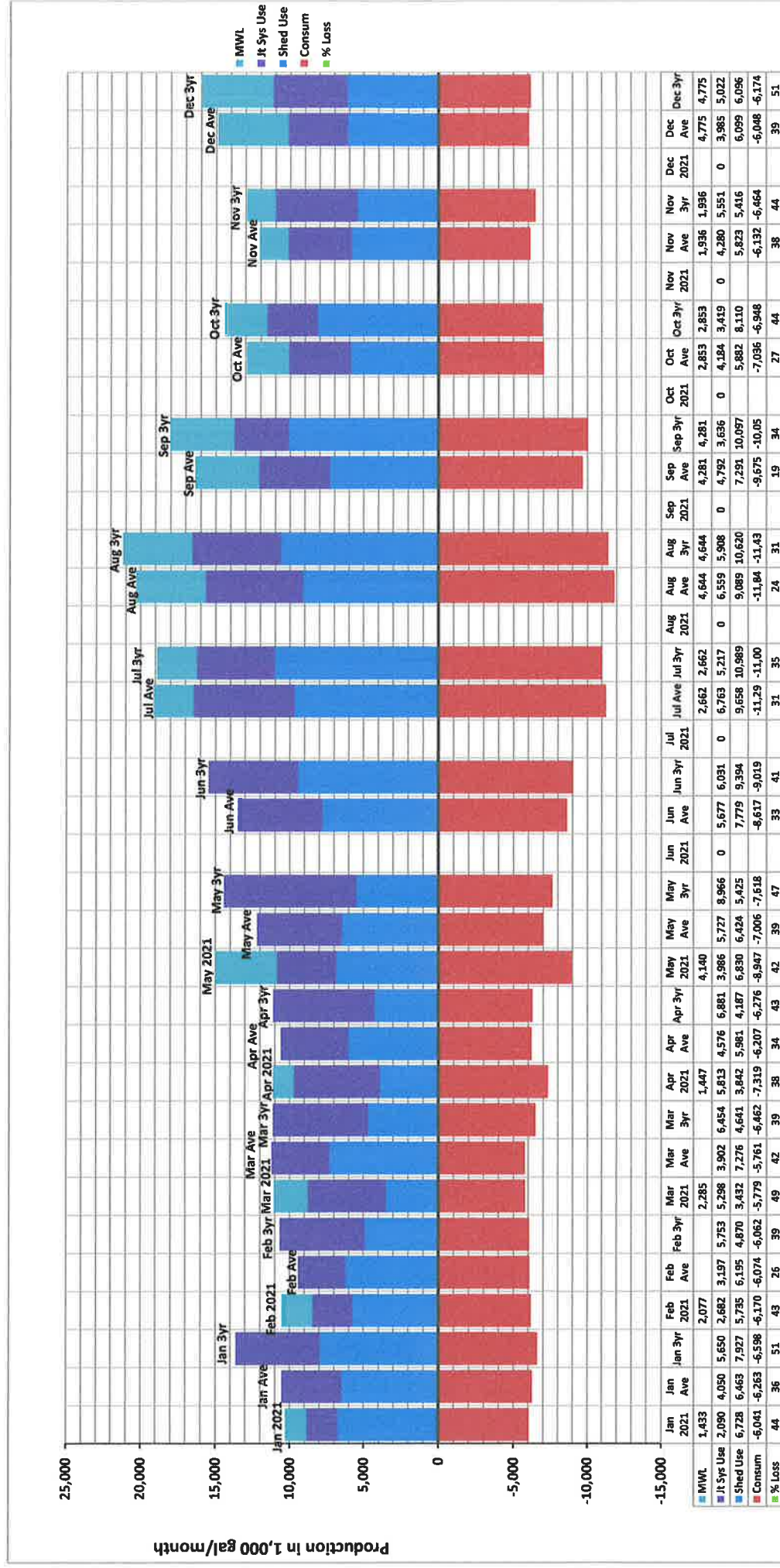
	Meters Billed	Meters Billed	Meters Billed	Meters Billed	Meters Billed	Meters Billed	Meters Billed	Meters Billed	Meters Billed	Meters Billed
JANUARY	1,245	1,260	1,266	1,310	1,390	1,446	1,457	1,461	1,469	1,486
FEBRUARY	1,245	1,252	1,269	1,320	1,399	1,454	1,452	1,463	1,474	1,484
MARCH	1,238	1,260	1,270	1,320	1,406	1,458	1,467	1,468	1,474	1,486
APRIL	1,247	1,254	1,269	1,319	1,411	1,461	1,465	1,467	1,474	1,484
MAY	1,251	1,267	1,276	1,321	1,417	1,467	1,469	1,460	1,482	1,484
JUNE	1,263	1,276	1,282	1,328	1,389	1,466	1,466	1,461	1,475	1,484
JULY	1,272	1,278	1,292	1,378	1,419	1,463	1,454	1,471	1,483	1,486
AUGUST	1,281	1,273	1,303	1,381	1,440	1,456	1,469	1,470	1,485	1,486
SEPTEMBER	1,272	1,269	1,319	1,389	1,449	1,457	1,466	1,477	1,487	1,486
OCTOBER	1,265	1,284	1,309	1,376	1,444	1,463	1,458	1,478	1,479	1,486
NOVEMBER	1,261	1,270	1,302	1,376	1,446	1,458	1,466	1,470	1,479	1,486
DECEMBER	1,260	1,259	1,314	1,376	1,453	1,459	1,461	1,467	1,485	1,486
YEARLY AVG	1,258	1,267	1,289	1,350	1,422	1,459	1,463	1,468	1,479	1,485
AVG CONS PER METER (C/F)	780	792	783	784	768	747	726	723	714	617

2021 Lafayette Water System

Month	Lafayette Watershed Production (in 1,000 gal units)										Lafayette Water Sys Summary (in 1,000 gal units)										
	Blue Bird (BA mtr + ASR)	Lafayette Pringle	Well 1	Well 8	Well 10 Bypass	Subtract ASR	Blue Bird Overflow	Watershed Total	Reservoir Vault	CP Well	Laf Usage from It Sys	MWU Usage	Total Usage	Total Billed	Diff (Usage - Billed)	% Loss	Pct. Inches	Joint Sys - Laf Mtr	Joint Sys - Dayton Mtr	Diff	
January	12,158	894	422	0	0	6,333	0	7,141	6,728	568	2,090	1,433	10,820	6,041	4,779	44.2	9.93	2,090	1,535	-555	
February	8,847	1,115	1,918	0	0	6,757	0	5,122	5,735	404	2,682	2,077	10,898	6,170	4,728	43.4	5.07	2,682	2,294	-388	
March	6,280	1,403	1,705	0	0	6,120	0	3,433	3,432	210	5,298	2,285	11,224	5,779	5,446	48.5	1.48	5,298	5,368	70	
April	3,002	1,353	870	421	1,043	0	2,847	0	3,842	639	5,813	1,447	11,741	7,319	4,422	37.7	0.50	5,813	5,808	-5	
May	1,650	1,333	579	249	584	2,571	0	6,630	6,630	631	3,986	4,140	15,387	8,947	6,439	41.8	0.71	4,248	3,986	-262	
June								0			0		0							0	
July								0			0		0							0	
August								0			0		0							0	
September								0			0		0							0	
October								0			0		0							0	
November								0			0		0							0	
December								0			0		0							0	
TOTAL	31,937	6,098	5,493	670	1,792	2,571	0	22,395	26,366	2,452	19,869	11,383	60,070	34,256	25,814						
Ave Month Flow, gpm	148	28	25	3	8	12	0	104	122	11	38		116	159		43.1					
Max Month Flow, gpm	281	32	44	10	24	60	0	156	156	15	135		356	207						estimated data	
Permit Rate, gpm	296	32	336	271	gpm when combined	200															
Month	Lafayette Joint Sys Production (in 1,000 gal units)										Dayton Joint Sys Production (in 1,000 gal units)										
	Well 2	Well 4	Well 5(x1/2)	Subtract 1/2 of Between	Laf Joint Sys Total	Lafayette Usage	Diff (Sys Total - Usage)	% Sys Prod	Well 1	Well 3	Well 5(x1/2) & 11th	Flower	Subtract 1/2 of Between	Day Joint Sys Total	Dayton Usage	Diff (Sys Total - Usage)	% Sys Prod	Sys Usage	Total Prod	Total Usage	% Loss
January	698	946	456	90	2,010	2,090	-81	47.2	43.3	806	456	0	90	2,244	2,740	-497	52.75	56.7	4,253	4,830	-14
February	758	1,336	697	105	2,686	2,682	4	45.9	53.5	1,242	697	0	105	3,160	2,327	833	54.05	46.5	5,846	5,009	14
March	892	1,755	928	139	3,436	5,298	-1,862	44.4	72.8	1,755	928	0	139	4,300	1,984	2,316	55.58	27.2	7,736	7,282	6
April	805	2,025	832	147	3,515	5,813	-2,299	43.5	72.8	2,001	832	0	147	4,571	2,171	2,400	56.53	27.2	8,085	7,984	1
May	260	2,043	836	127	3,012	3,986	-974	42.9	58.1	1,753	836	0	127	4,003	2,879	1,124	57.06	41.9	7,015	6,865	2
June														0						0	0
July														0						0	0
August														0						0	0
September														0						0	0
October														0						0	0
November														0						0	0
December														0						0	0
TOTAL	3,413	8,105	3,748	608	14,658	19,869	-5,211			7,441	3,748	0	608	18,277	12,101	6,176			32,935	31,970	
Ave Month Flow, gpm	16	38	17	3	68	92		44.8	60.1	34	17	0	3	35	56		55.20	39.9			
Max Month Flow, gpm	21	47	21	3	81	135		47.2	72.8	44	21	0	3	106	67		57.06	56.7			
Permit Rate, gpm	300	300	300	300						300	300										estimated data

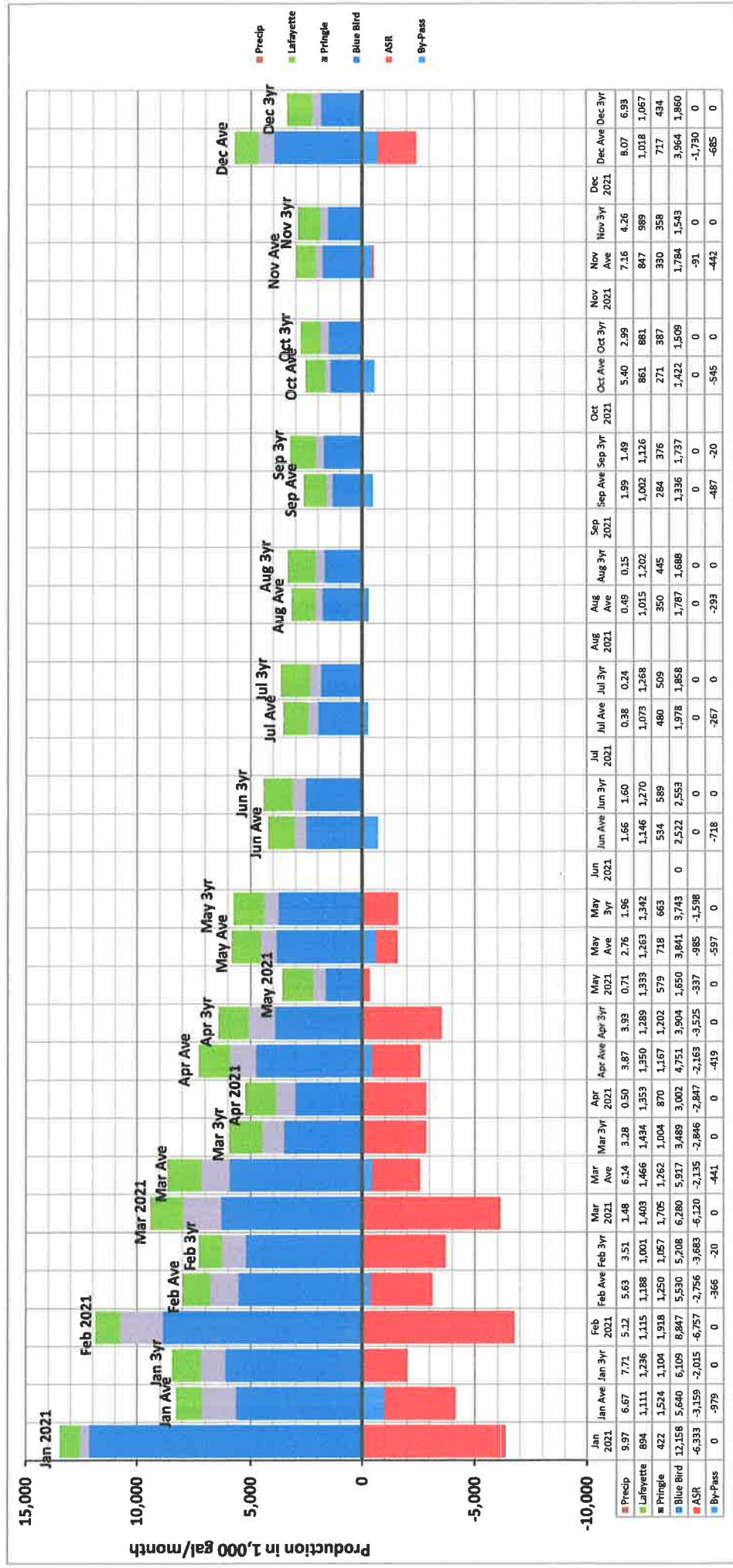
Lafayette Total Usage for 2021

with Average Usage for 2007-2020; 3 Year Average for 2018-2020



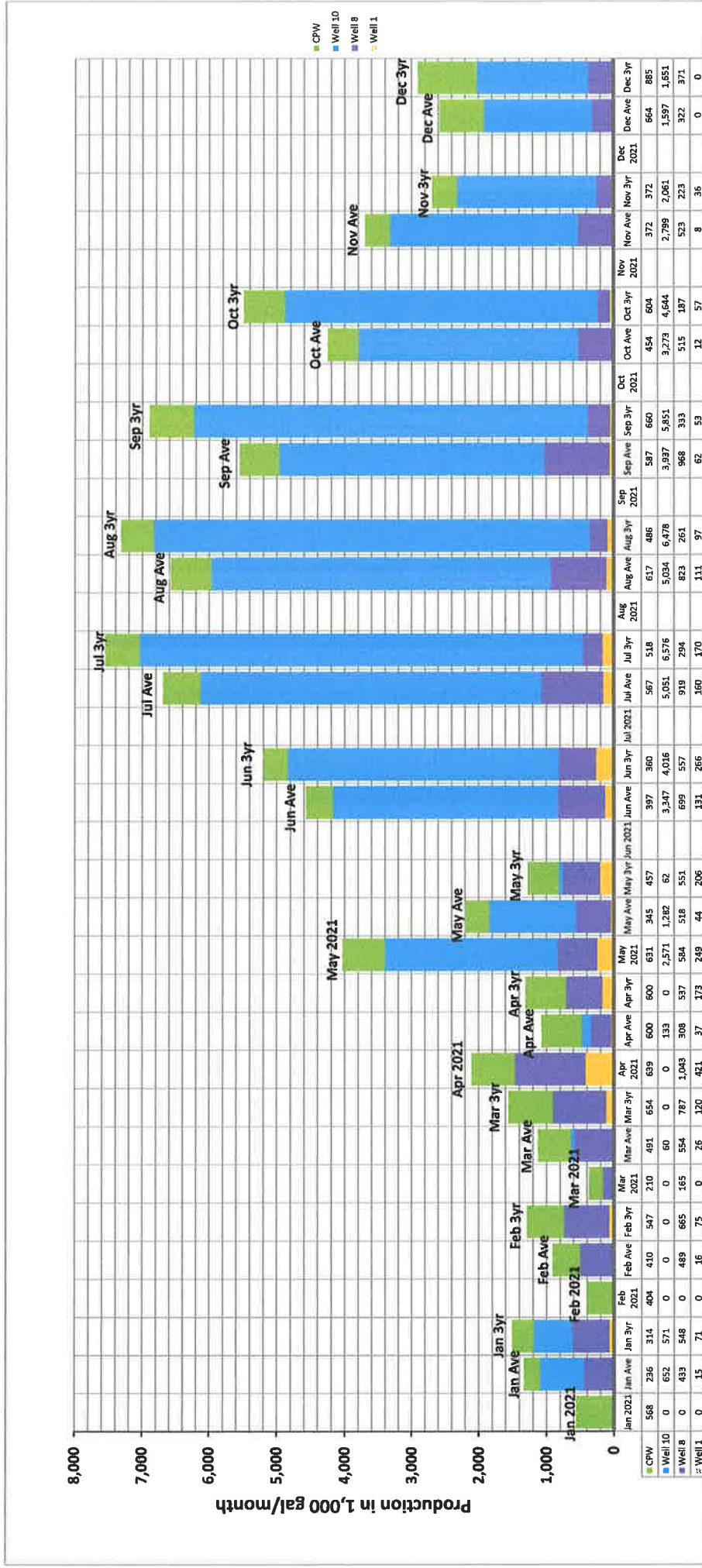
Spring Production for 2021

with Average Production for 2007-2020; 3 Year Average for 2018-2020



Watershed Well Production for 2021

with Average Production for 2007-2020; 3 Year Average 2017-2020



Joint System Well Production for 2021

with Average Production for 2007-2020; 3 Year Average for 2018-2020

